



Lindsey Lane Design

Hardware

- Polished Brass
- Satin Brass
- Polished Nickel
- Satin Nickel

Bracketing

- 2 Brackets: 12" - 60"
 - 3 Brackets: 61" - 108"
 - 4* or 5* Brackets: 109" - 192"
- (*Curtains cannot fully draw)

Care Instructions

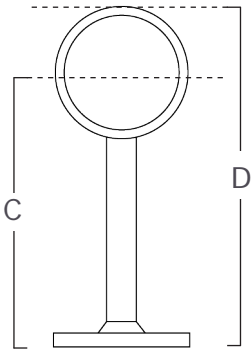
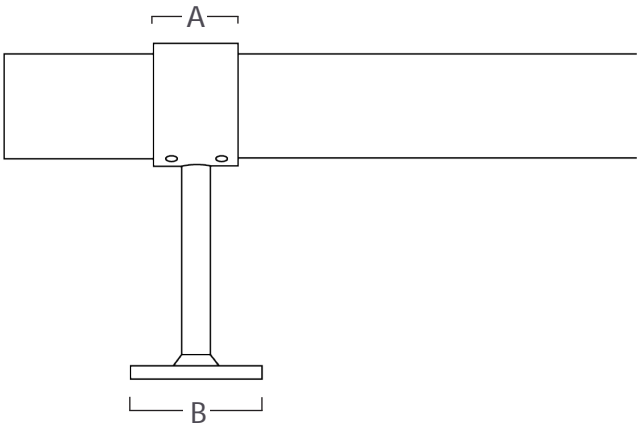
Metal: Use a non-abrasive brass polish wadding, such as Brasso or Nevr-Dull.

Lucite: Clean with a soft cloth, using only dish soap and water.

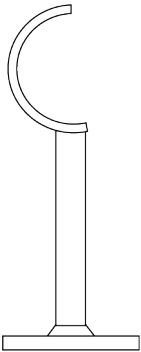
Hardware Included

Oval head #8 wood screws (2 per bracket)

Finials and rings are sold separately



Loop Bracket



Halfmoon Bracket

ITEM	A	B	C	D
Brackets	1.15"	1.75"	3.62"	4.5"



1.5" LUCITE CURTAIN ROD BRACKETING DIAGRAM

TECH SPEC

RODS 12" - 60"

Placement A.1

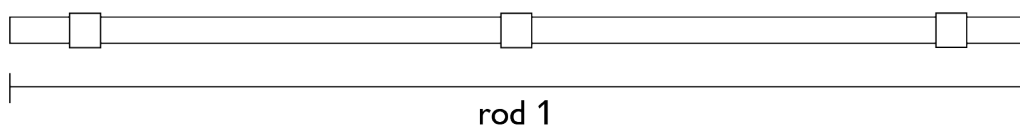
2 loop brackets and 1 rod



RODS 61" - 90"

Placement B.1

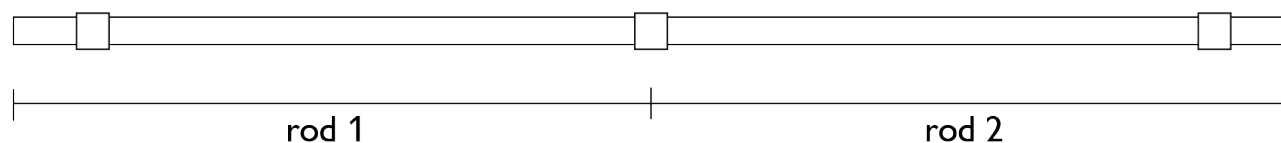
3 loop brackets and 1 rod*



RODS 91" - 108"

Placement B.2

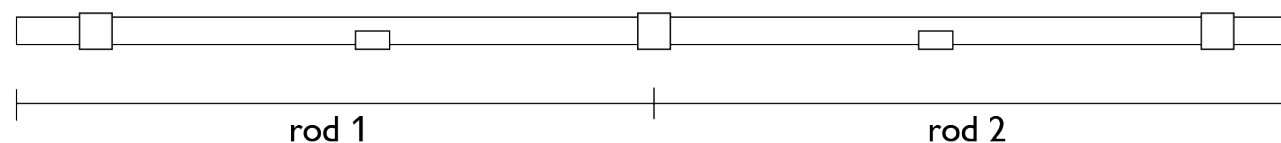
3 loop brackets and 2 rod



RODS 109" - 192"

Placement C.1**

3 loop brackets, 2 halfmoon brackets and 2 rods



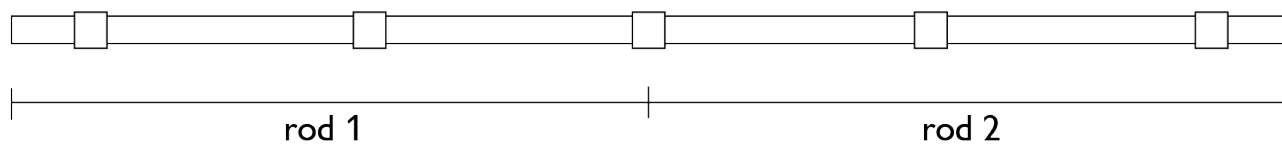
*For shipping, ease of assembly, and safety, curtain rods greater than 60" may be split into smaller lengths to be joined together at a bracket.

**This option allows for curtains to fully draw if paired with C rings. Any part of the curtain that needs to bypass a halfmoon bracket needs a C ring; the remaining rings should be full rings (typically a 50/50 ratio).



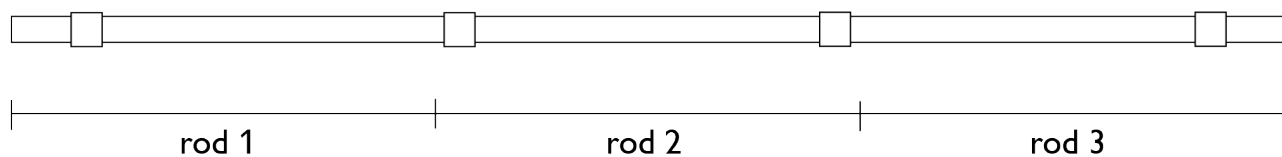
Placement C.2***

5 loop brackets and 2 rods



Placement C.3***

4 loop brackets and 3 rods



***Curtains cannot fully draw

